

P scales factsheet

The use of Performance scales (P scales) is statutory when reporting attainment for pupils with special educational needs who are working below level 1 of the national curriculum.

They are used at the end of key stage 1, key stage 2 and key stage 3 for reporting teacher assessment in English, mathematics and science to QCDA. P scales are also used for reporting teacher assessment to parents or persons with parental responsibility in other national curriculum subjects.

P scales must only be used when assessing children with special educational needs.

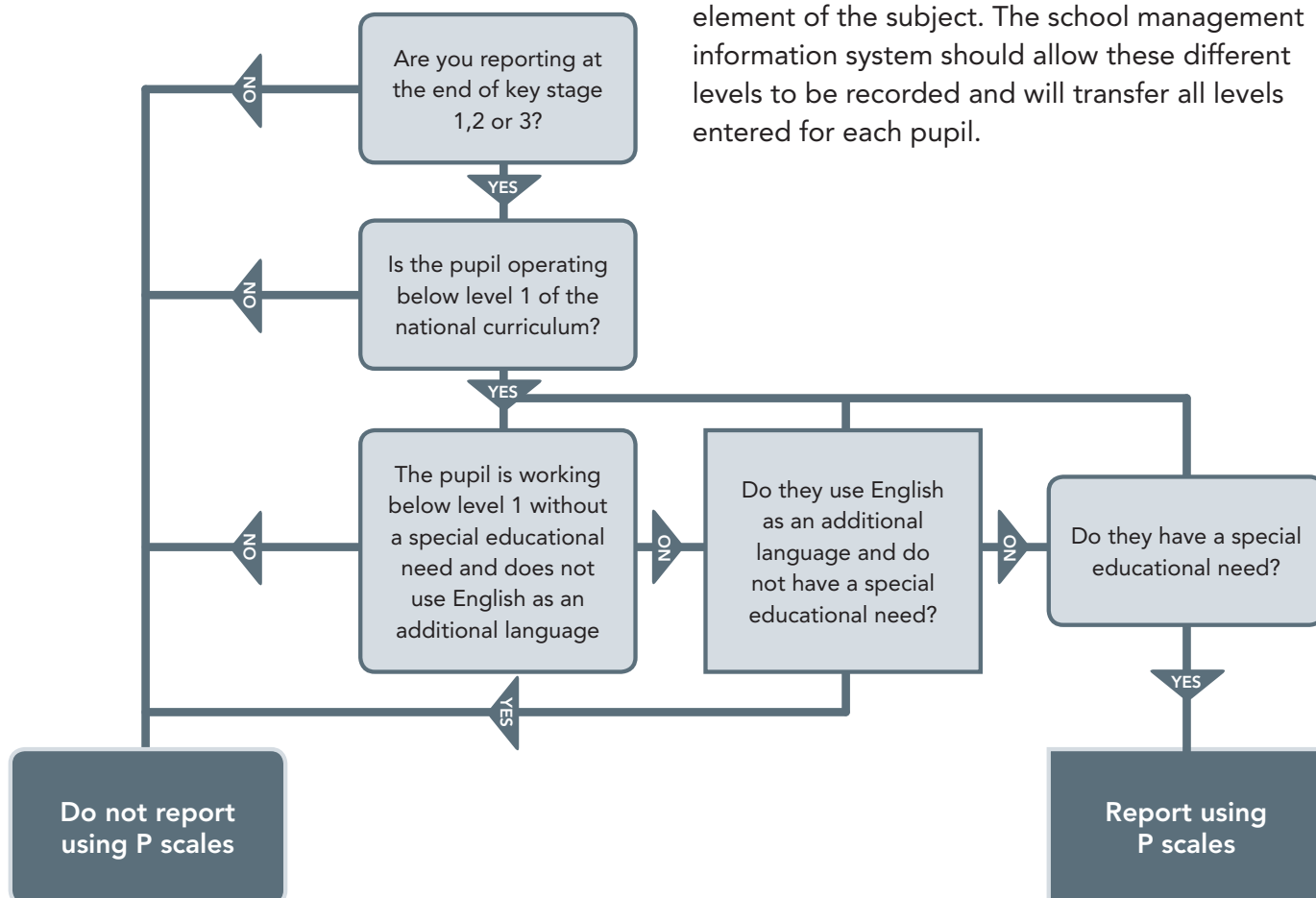
Performance descriptions

The performance descriptions for P1–P3 are the same across English, mathematics and science. The descriptions show the range of overall performance that pupils at this level might demonstrate.

If a pupil is at P1i–P3ii level in English, then it may not be necessary to give separate reading, writing, speaking or listening levels. If a pupil is at a level higher than P3ii in English, then separate levels (P4–P8) can be given in reading, writing, speaking or listening and an overall English level is not expected. This also applies to mathematics, number, using and applying mathematics, and shape, space and measures. For science, a single level from P1–P8 should be given.

There may be exceptional circumstances where a pupil is judged to be at P1i–P3ii in English and/or mathematics but at P4–P8 in a particular element of the subject. The school management information system should allow these different levels to be recorded and will transfer all levels entered for each pupil.

When should P scales be used?



Early years foundation stage (EYFS)

If a child has special educational needs and their EYFS attainment against the EYFS profile has not been demonstrated at the end of this stage, the school may wish to continue with an early years curriculum to support the child's learning and development. In this case, the EYFS profile, rather than P scales, should be used for assessment as it may be suitable in year 1 for a small number of children.

If schools choose to assess pupils using P scales towards the end of year 1, teachers should base such judgements on a review of evidence gathered from everyday teaching and learning. Professional judgement should be used to decide which P scale description best fits a pupil's performance.

Further information

Visit www.qcda.gov.uk/curriculum/sen/6058.aspx for the P scale descriptions.

Further information and supporting materials will be made available on www.qcda.gov.uk/pscales.

P scale subject	Reportable levels
English	P1i, P1ii, P2i, P2ii, P3i, P3ii
reading	P4, P5, P6, P6, P7, P8
writing	
speaking	
listening	
Mathematics	P1i, P1ii, P2i, P2ii, P3i, P3ii
number	P4, P5, P6, P6, P7, P8
using and applying mathematics	
shape, space and measures	
Science	P1i, P1ii, P2i, P2ii, P3i, P3ii, P4, P5, P6, P6, P7, P8

Contact details

For additional information about calculating overall subject levels, please contact the national curriculum assessments helpline on 0300 303 3013 or email assessments@qcda.gov.uk.